

Product name	NIKKI
Description	Hose retrieval system
Manufacturer	William's Fire and Hazard Control
Revision	1.0/2024



ASK ABOUTH THE PRODUCT

1. Description

The WF&HC-NIKKI Hydraulic Hose Recovery module operates in conjunction with a variety of Hose Layer configurations. The module provides hose recovery for diameters of 5 to 12”.

The module is a hydraulic based system that mounts on 1prime movers between the chassis cab and rear-build. The unit is powered by a self-contained 4-stroke motor and hydraulic pump.

The WF&HC-NIKKI Hydraulic Hose Recovery module It carries the benefit over other units in the market in that the hose recovery tray (over-cab device) can be moved from left to right by the driver/operator allowing the driver to “follow” hoses that snake across roads without having to leave the road surface. A single person can be used in the rear to pay the hose into the individual hose trays.

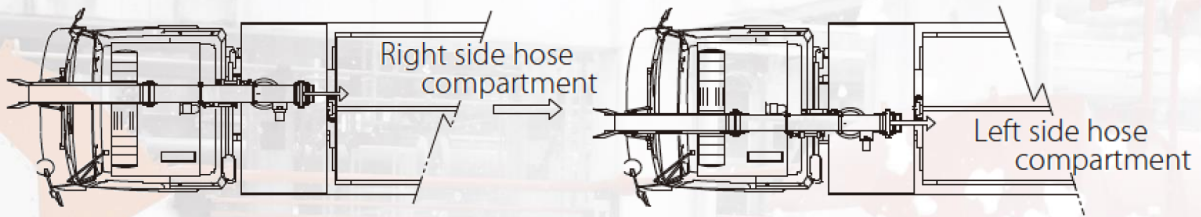
2. Technical details

	Item	Technical Specifications
Conveyor module	Module Dimensions	600mm (w) x 3600 mm (L)
	Conveyor dimensions	150 mmx 3 belts
	Driving means	Tooth belt)
	Hose Pulling Performance	50kg
	Hose retrieval sizes	4,6,8 i 12”
	Speed adjustment	0-0,5m/s
		Proportional Hydraulic solenoid valve
Drivers	Power supply	Hydraulic
	Slide Stroke	800mm
	Overall dimensions	1600mm x3900mm x 2150mm
	Overall Weight	1600kg
	Engine	Subaru EH41D
	Performance	7kW @ 3600 obr/min
	Hydraulic Pump	Daikin V15A-95
	Performance	23 MPa @ 2300 obr/min
	Conveyor Motors	Nippon Oil Pump ORB-S-160
		163,4cc / rcv
	Oil Reservoir	20 lt
	Oil type	VG32



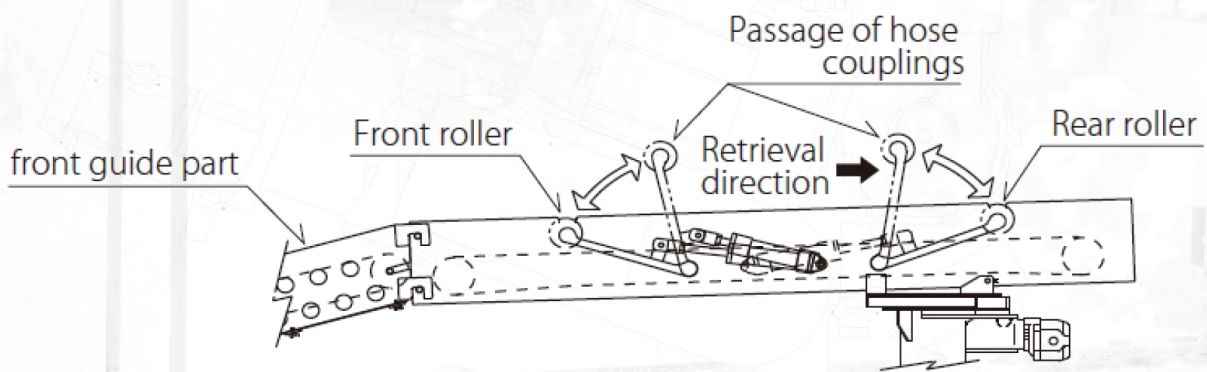


3. Design Informations

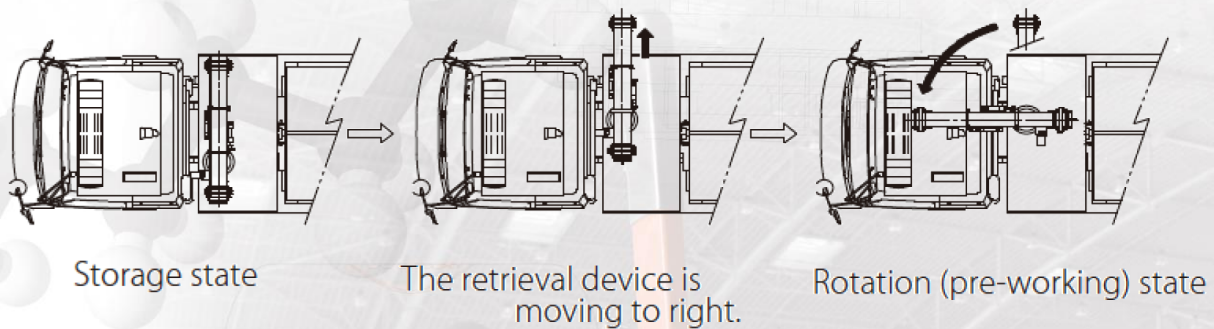


The retrieval device is moving to right and left.

The prime mover can either be a Hook-loader or dedicated Hose Layer. In the instance of the Hook Loader the unit will be mounted between the chassis-cab and the hook-loader pallet.

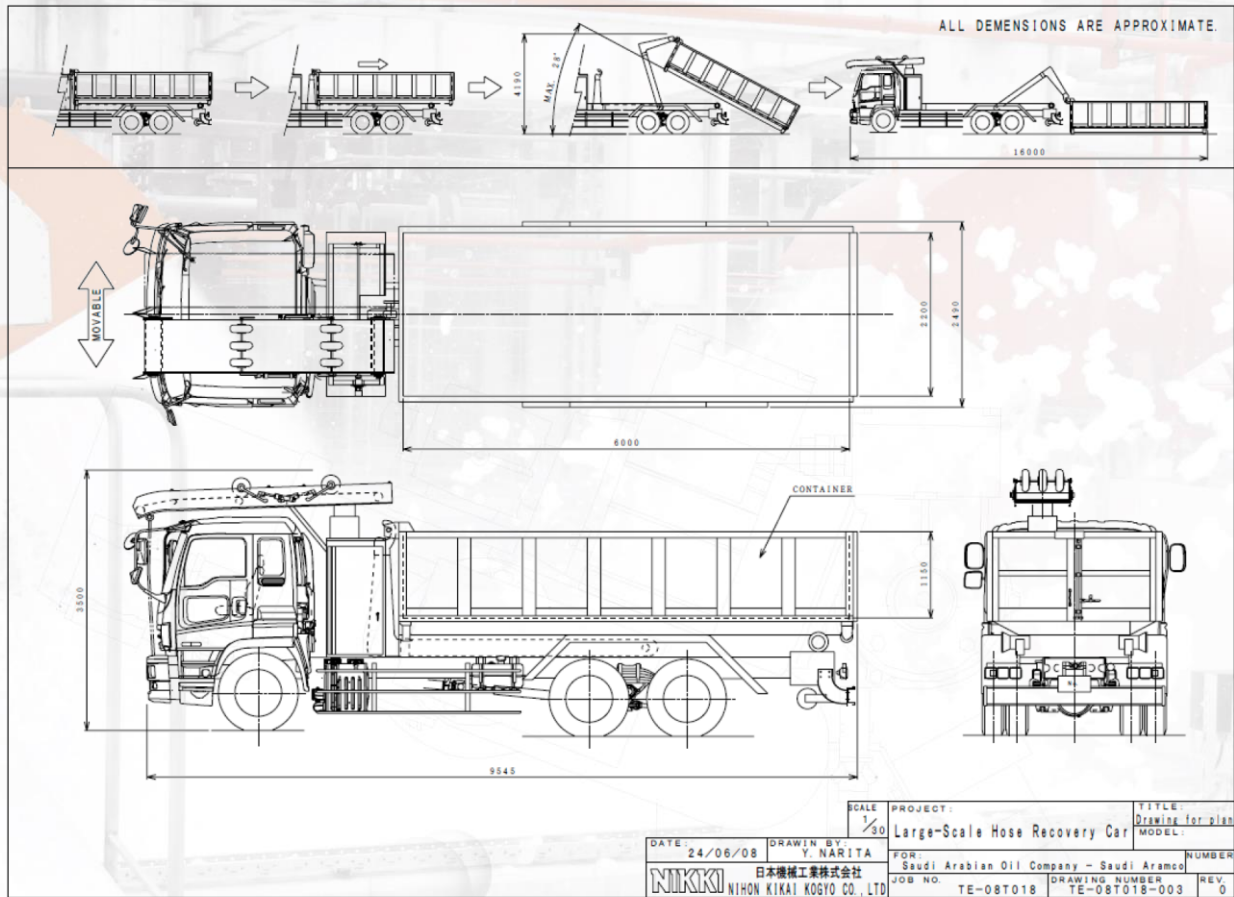


Overview of the Conveyor Retrieval Boom



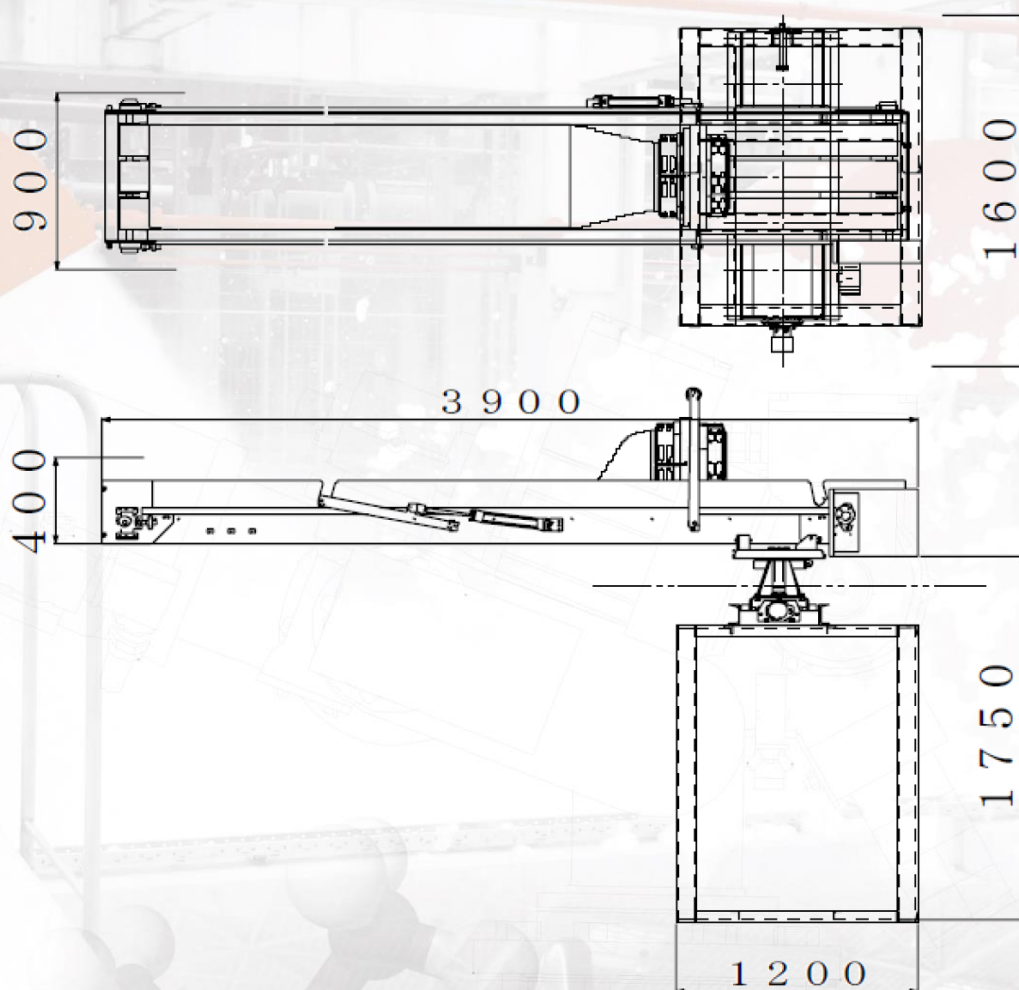
Deployment of the Retrieval Boom from its stowed travel position



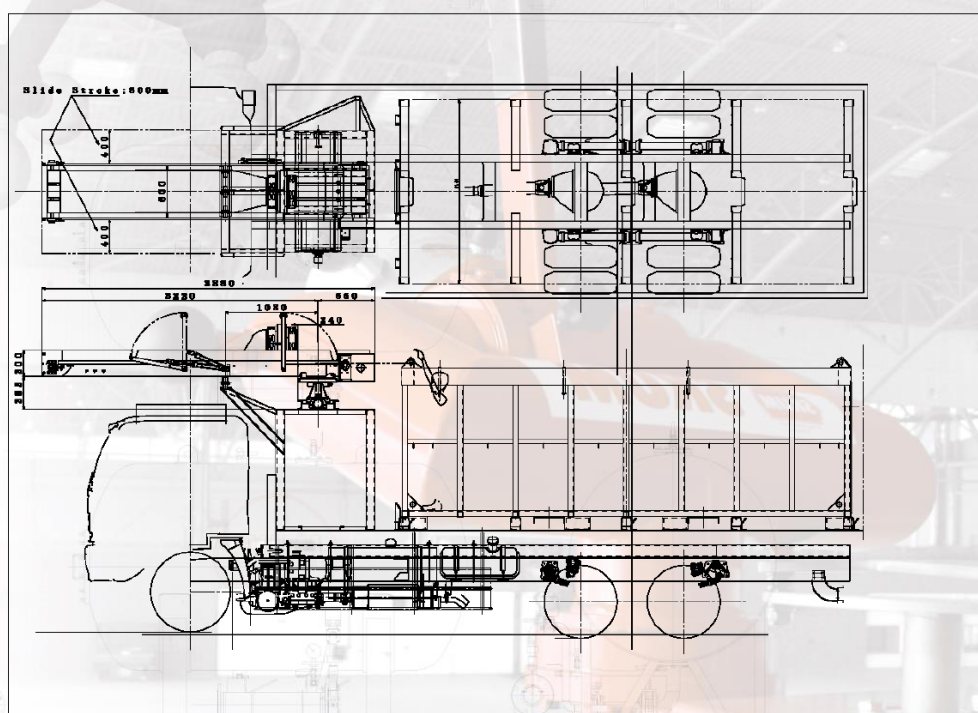


An example of the WG&HC-NIKKI Hydraulic Hose Recovery Module's installation in a Hook Loader

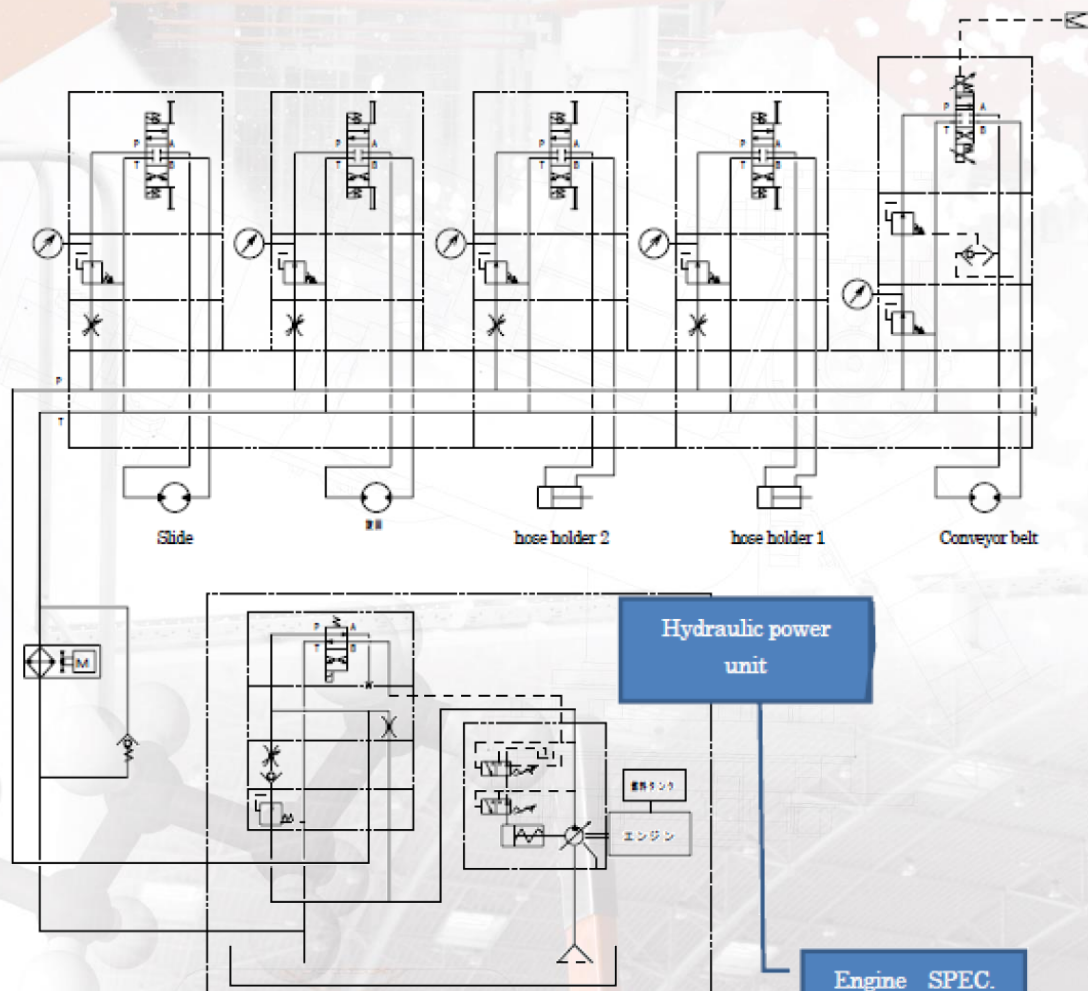




Overall dimensions (mm)



Hydraulic circuit



Engine SPEC.

名 称	EH41D	EH41DS
形 式	空冷4サイクル4気筒 OHV式ガソリンエンジン	
総排気量 (cm ³ /cc)	404	
額 定 馬 力 (kW/PS/rpm)	6.3/8.5/3000	7.0/9.5/3600
最 大 出 力 (kW/PS/rpm)	9.9/13.5/3600	
回 転 方 向	左 (出力軸より見て)	
使 用 潤 滑 油	Oリング正圧オイルまたは自動車用エンジンオイル S5クラス以上 #30 ~ #30 (寒冷時 10W-30)	
使 用 燃 料	自動車用無鉛ガソリン	
燃料タンク容量 (L)	約7.0	
点 火 プ ラ ゴ	NGK BP6E3	
点 灯 電 力 (V-W)	消費可能(12-15)	-
始 動 方 式	リコイル式	スターターモーター
充 電 電 力 (V-A)	-	12-1.3
乾 燥 重 量 (kg)	31	34
寸 法 (全長×全幅×全高) (mm)	389×431×443	

cylinder capacity

Power

Max.Power

Weight(dry)

Dimension